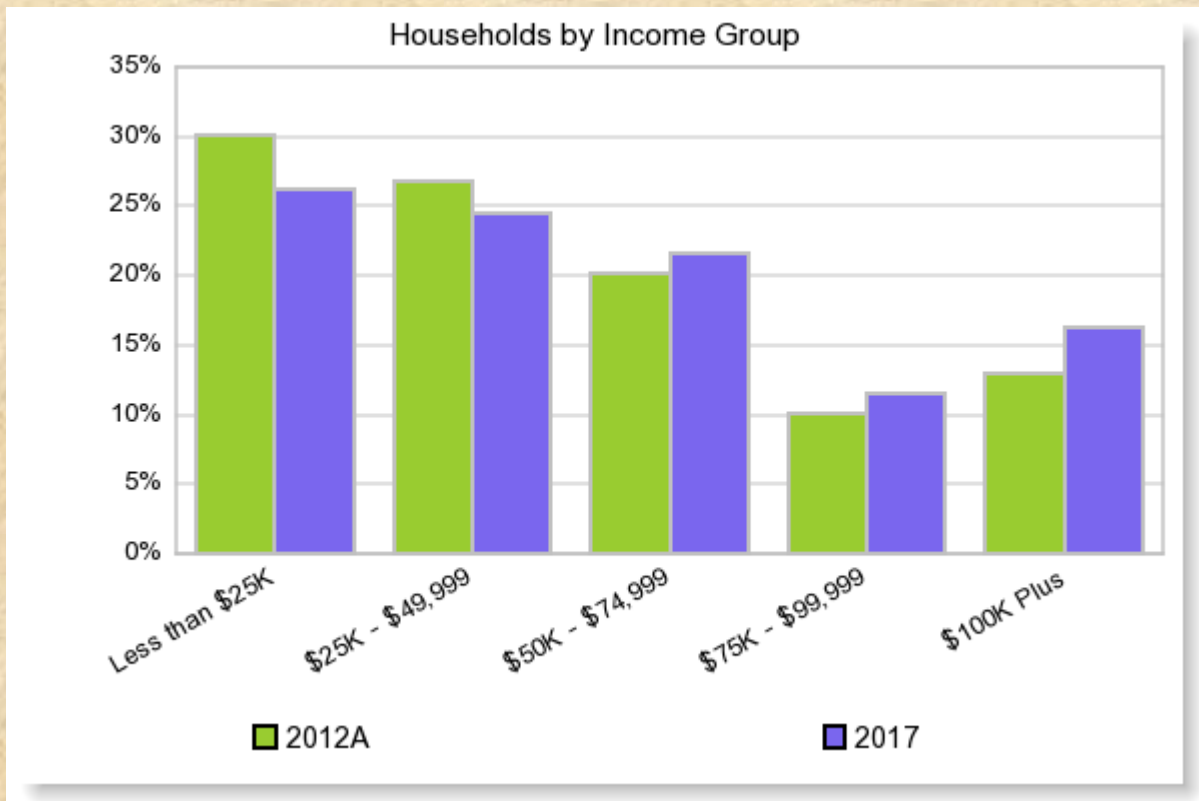




# BASIC DEMOGRAPHIC SUMMARY CHARTS

Geography: Texarkana, TX-Texarkana, AR Metro

Date: October 1, 2013



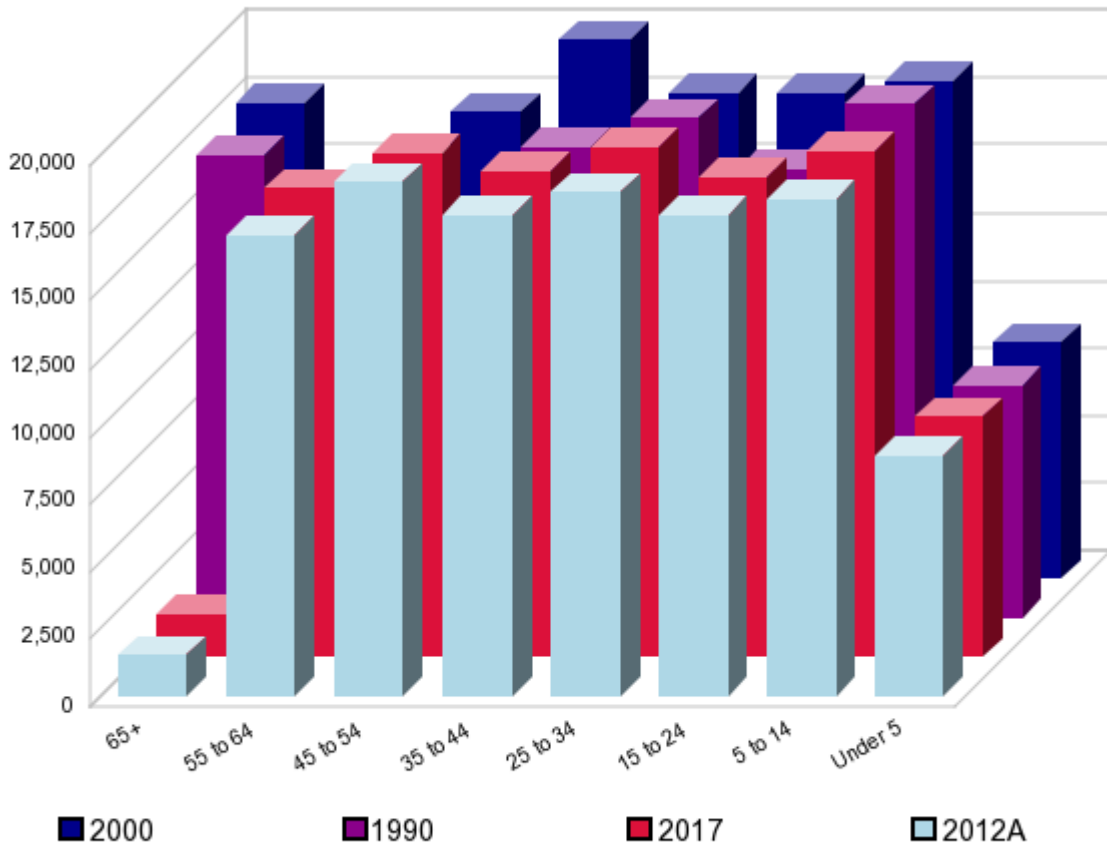
Household Size  
2012A



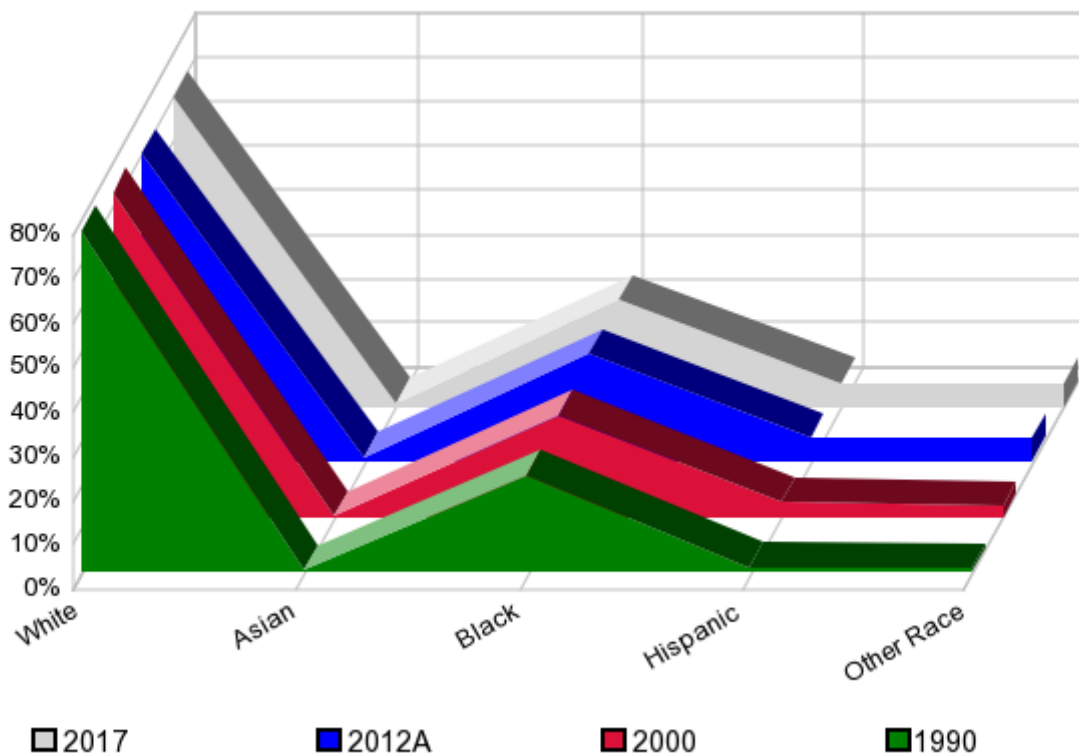
A 27.7%    B 33.7%    C 16.8%    D 12.7%    E 5.7%    F 3.3%

A: 1 Person per Household    C: 3 People per Household    E: 5 People per Household  
 B: 2 People per Household    D: 4 People per Household    F: 6+ People per Household

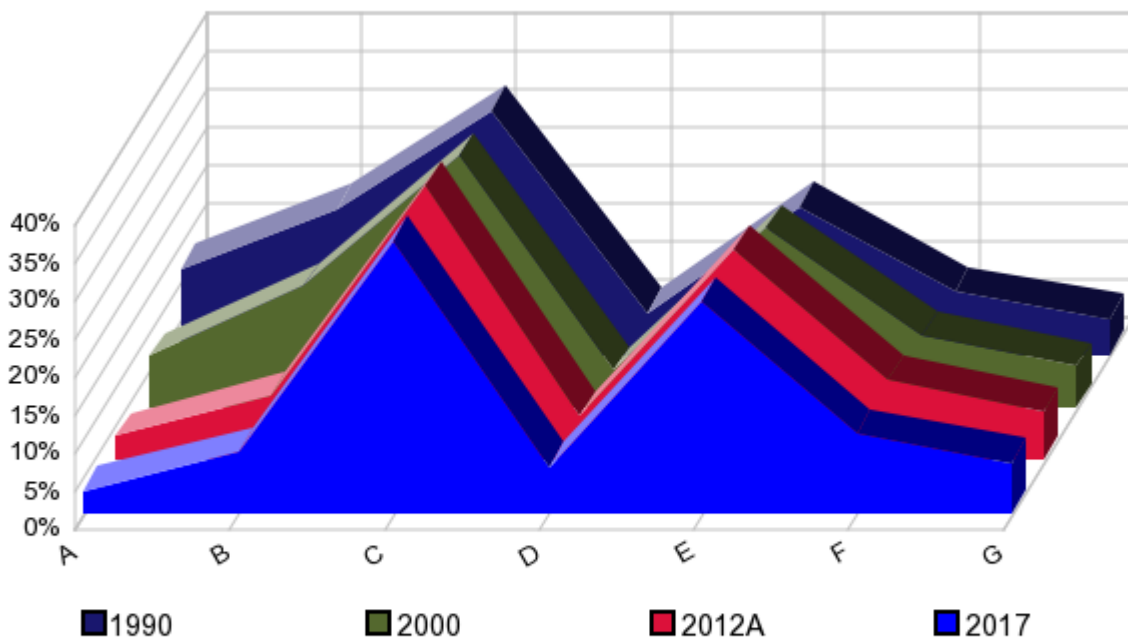
Age



Race and Ethnicity  
Percent Change



Educational Attainment  
Percent Change



A: Grade K - 8  
B: Grade 9 - 12  
C: High School Grad

D: Associates Degree  
E: Some College  
F: Bachelors Degree

G: Graduate Degree

Marital Status  
2012A



Divorced  
25.8%

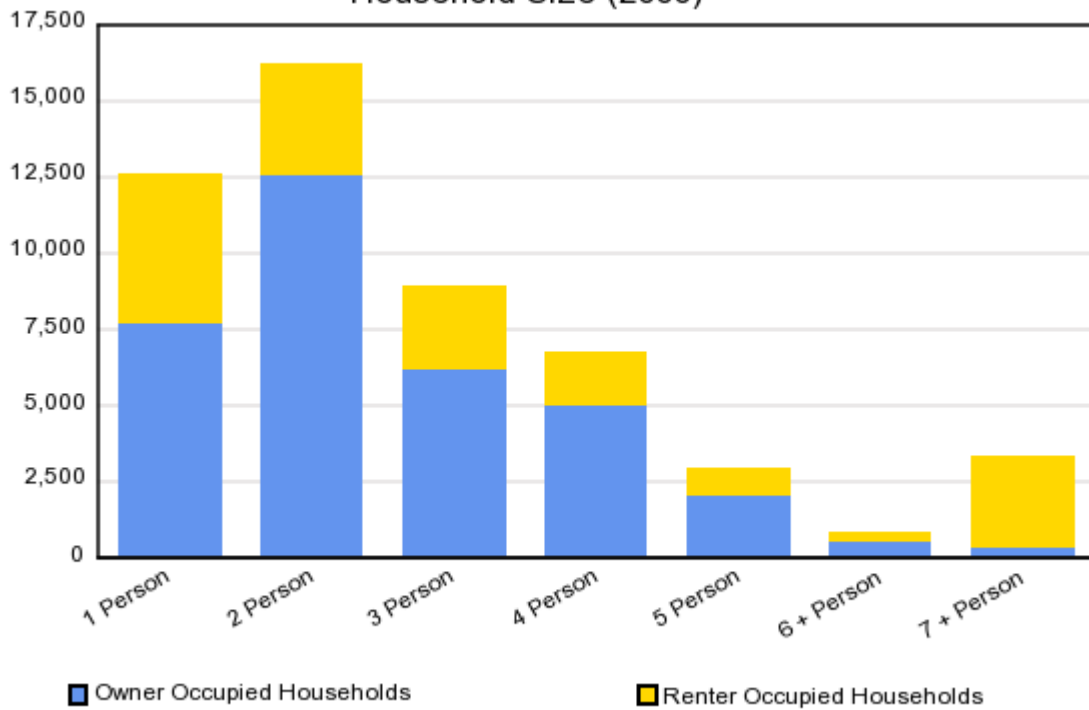
Never Married  
24.4%

Widowed  
6.5%

Married  
40.7%

Separated  
2.5%

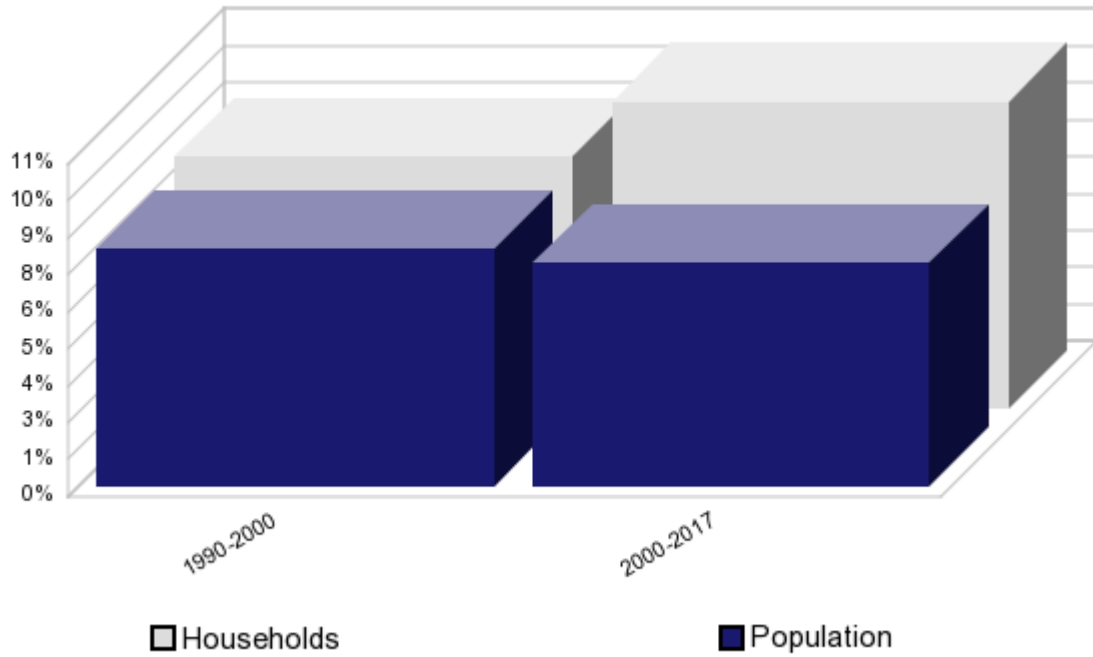
Household Size (2000)



Owner Occupied Households

Renter Occupied Households

### Households and Population Percent Change



© 2012 Experian, Inc. All Rights Reserved, Alteryx, Inc.  
© U.S. Census Bureau (1990 and 2000 Census) All Rights Reserved, Alteryx, Inc.