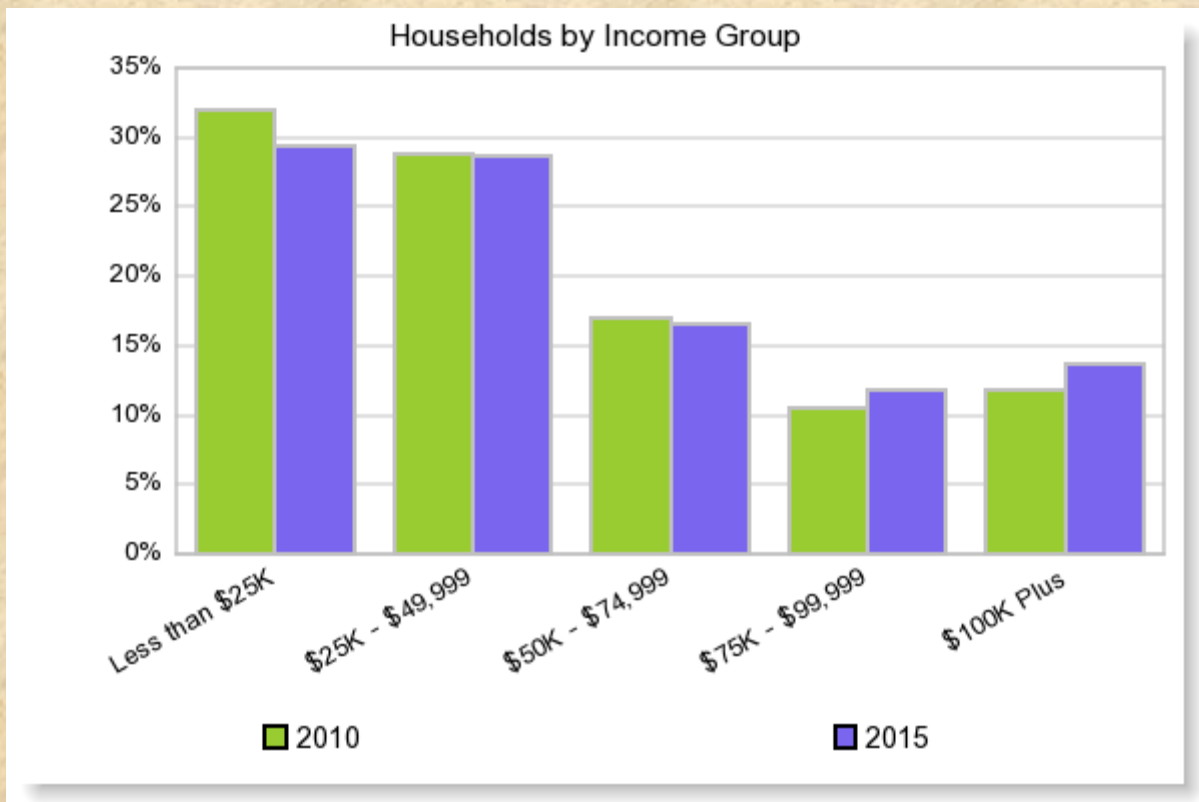




BASIC DEMOGRAPHIC SUMMARY CHARTS

Texarkana, TX-Texarkana, AR Metro

October 1, 2013



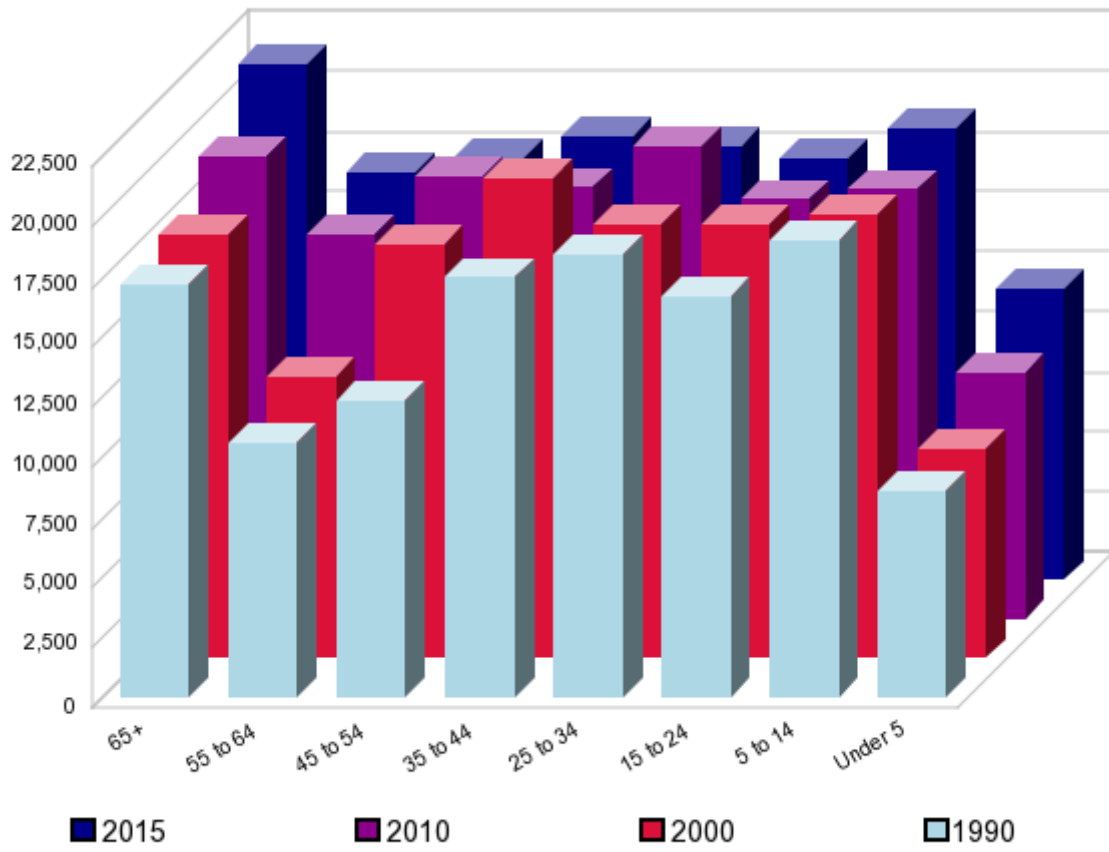
Household Size
2010



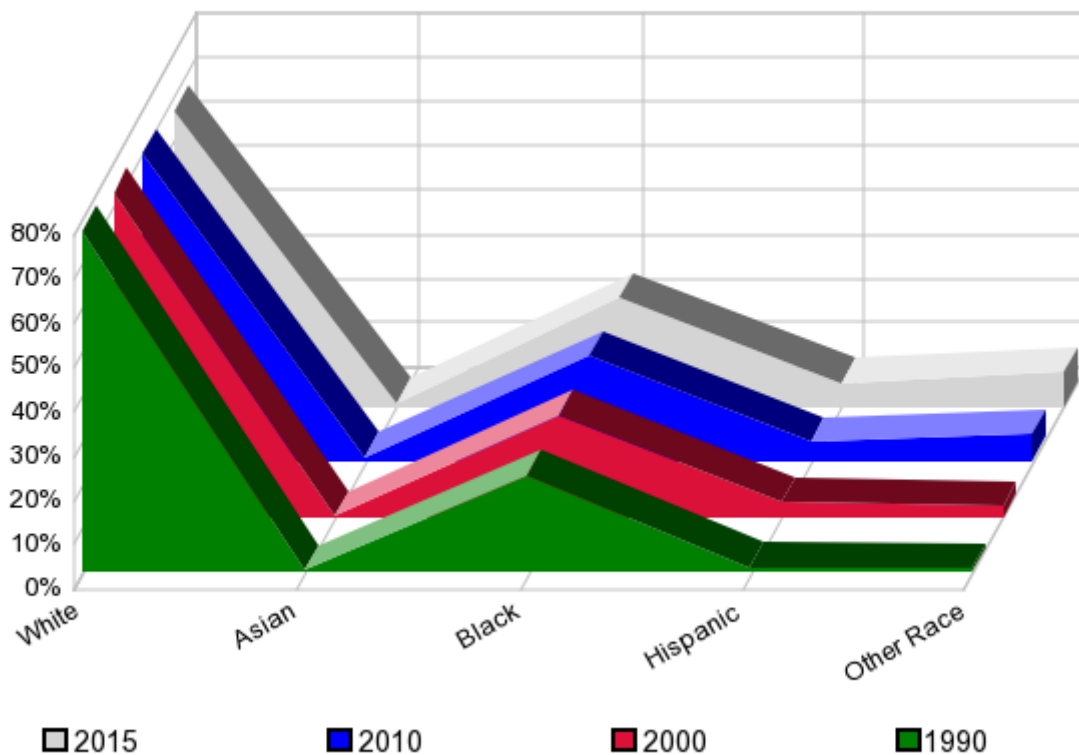
A 29.1% B 29.1% C 16.0% D 16.5% E 7.1% F 2.2%

A: 1 Person per Household C: 3 People per Household E: 5 People per Household
 B: 2 People per Household D: 4 People per Household F: 6+ People per Household

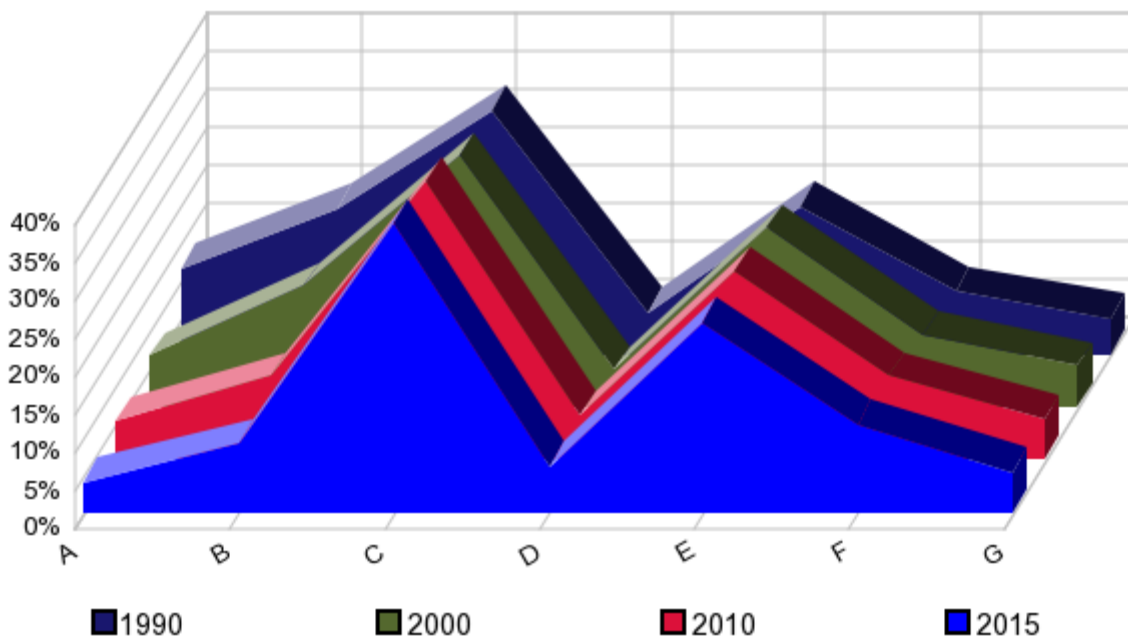
Age



Race and Ethnicity
Percent Change



Educational Attainment
Percent Change



A: Grade K - 8
B: Grade 9 - 12
C: High School Grad

D: Associates Degree
E: Some College
F: Bachelors Degree

G: Graduate Degree

Marital Status
2010



Divorced
10.8%

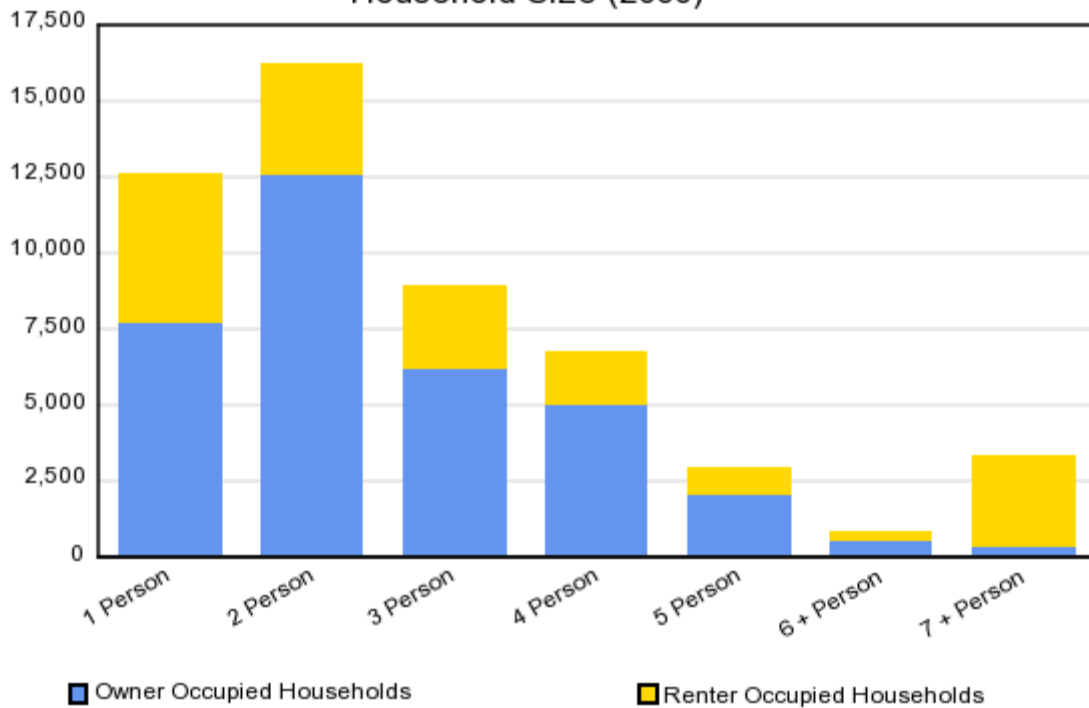
Never Married
21.3%

Widowed
8.3%

Married
51.0%

Separated
8.7%

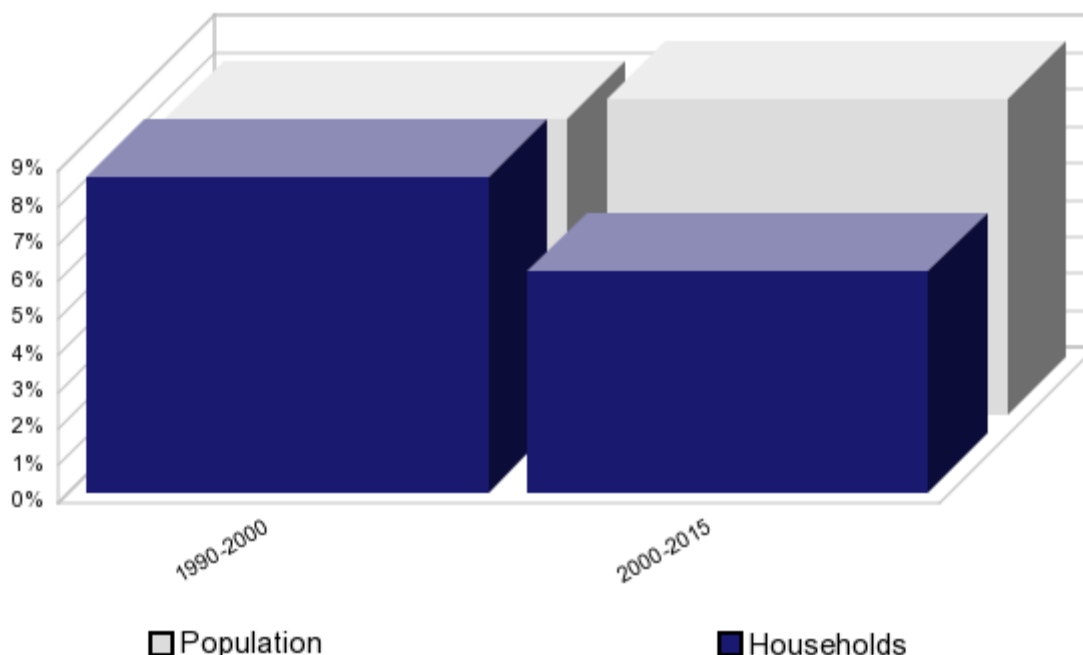
Household Size (2000)



Owner Occupied Households

Renter Occupied Households

Households and Population Percent Change



Financial 2010 Asset Type Owned (HH)

A Primary Residence	32,220
Any Financial Assets	46,007
Any Non-Financial Assets	45,061
Bonds	851
Business Assets	5,109
Certificates of Deposit	5,790
Investment Real Estate	3,736
Life Insurance with Cash Value	11,372
Mutual Funds	6,763
Other Financial Assets	4,941
Other Managed Assets	3,345
Other Non-Financial Assets	3,473
Retirement Accounts	22,113
Savings Bonds	8,141
Stocks	9,362
Transaction Accounts	44,617
Vehicle Assets	41,604

Financial 2010 Debt Type (HH)

Any Debt	36,446
Credit Card Debt	21,705
Installment Payment Debt	1,774
Investment Real Estate Debt	21,824
Mortgage Debt	21,567
Other Debt	3,614
Other Lines of Credit Debt	757

Financial 2010 Debt:Aggregate Debt by Type

Credit Card Debt	\$396,756,896
Installment Loan Debt	\$284,021,317
Investment Real Estate Debt	\$107,230,652
Lines of Credit Debt	\$24,420,804
Mortgage Debt	\$2,594,562,188
Other Debt	\$56,959,098
Total Debts	\$3,463,950,954

Financial 2010 Assets:Aggregate Value by Type

Any Financial Assets	\$8,109,203,139
Any Non-Financial Assets	\$14,690,819,993
Bonds (Not US Savings)	\$411,997,069
Business Equity	\$3,637,758,463
Cash Value Life Ins	\$246,991,432
Certificates of Deposit	\$312,362,500
Home Equity	\$7,547,482,469

Financial 2010 Debt:Median Debt by Type

Credit Card Debt	\$7,897
Installment Loan Debt	\$5,653
Investment Real Estate Debt	\$2,134
Lines of Credit Debt	\$486
Mortgage Debt	\$51,643

Investment Property Equity	\$1,026,519,485	Financial 2010 Net Worth (HH)	
Mutual Funds	\$1,168,456,679	Aggregate Net Worth	\$19,336,072,177
Other Financial Assets	\$173,589,615	Average Household Net Worth	\$384,872
Other Managed Accounts	\$646,029,822		
Other Non-Financial Assets	\$212,483,292		
Retirement Accounts	\$2,635,212,572		
Savings Bonds	\$47,168,901		
Stocks	\$1,384,444,676		
Transaction Accounts	\$1,082,949,872		
Vehicles Owned	\$785,348,054		

Financial 2010 Assets:Median Value by Type

Any Financial Assets	\$161,409
Any Non-Financial Assets	\$292,411
Bonds (Not US Savings)	\$8,200
Business Equity	\$72,407
Cash Value Life Ins	\$4,916
Certificates of Deposit	\$6,217
Home Equity	\$150,228
Investment Property Equity	\$20,432
Mutual Funds	\$23,257
Other Financial Assets	\$3,455
Other Managed Accounts	\$12,859
Other Non-Financial Assets	\$4,229
Retirement Accounts	\$52,452
Savings Bonds	\$939
Stocks	\$27,556
Transaction Accounts	\$21,555
Vehicles Owned	\$15,632