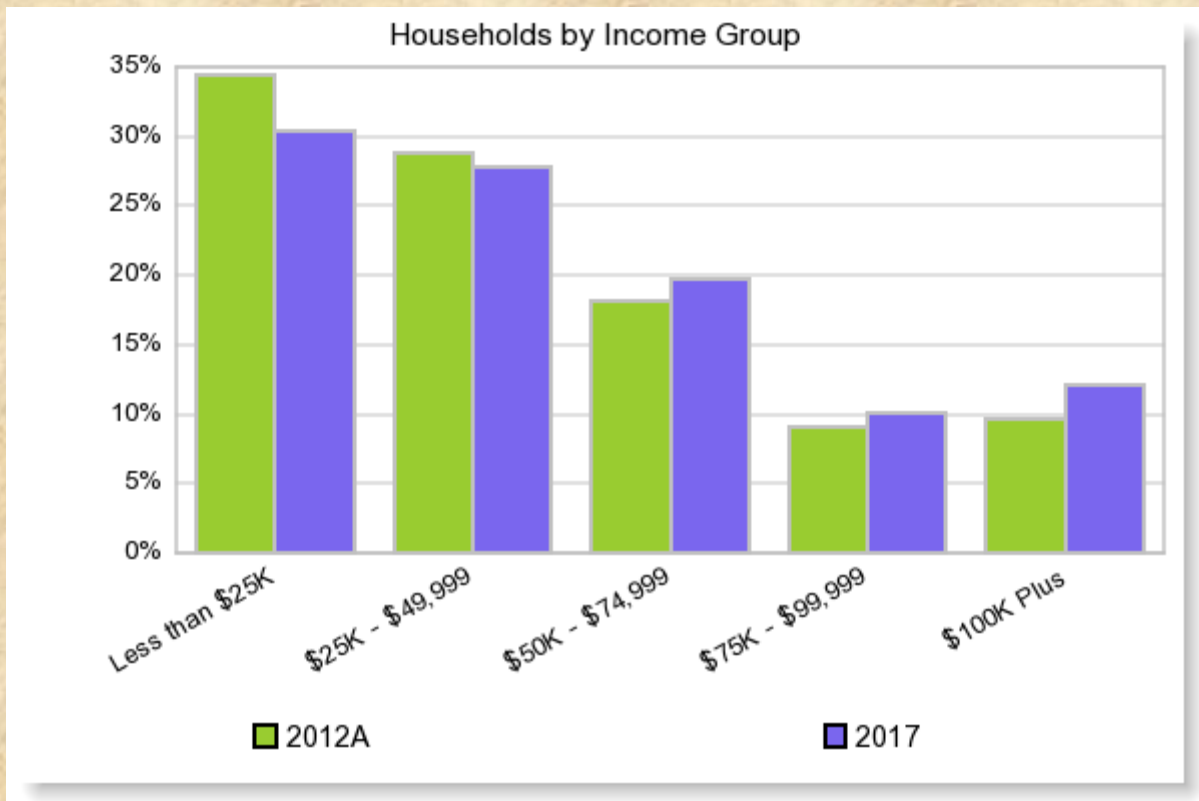




# BASIC DEMOGRAPHIC SUMMARY CHARTS

Geography: Bowie County, Cass County, Columbia County, Hempstead County...

Date: September 30, 2013



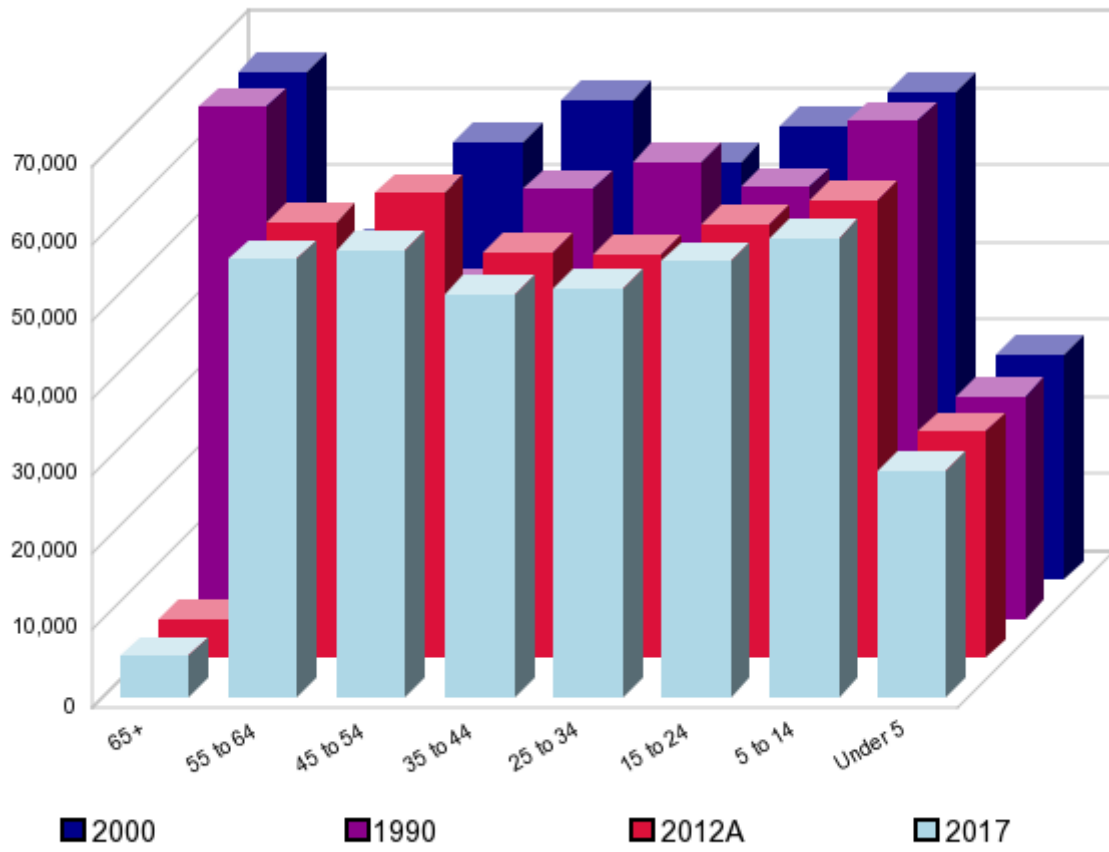
Household Size  
2012A



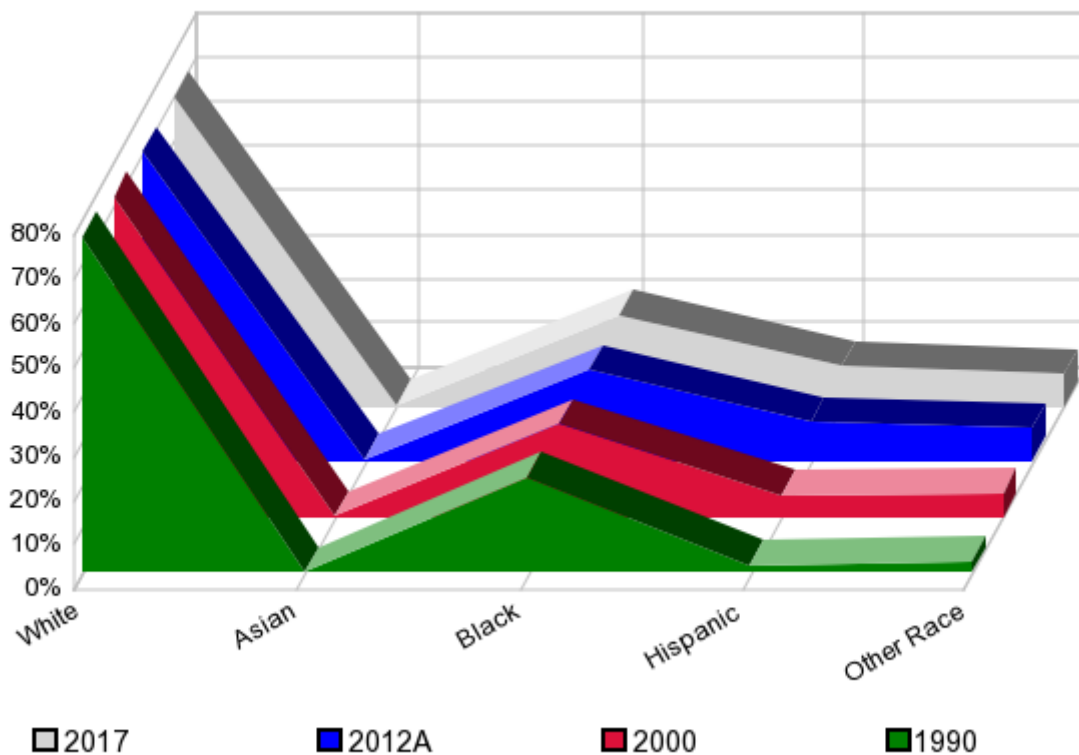
A 27.4%    B 34.4%    C 16.1%    D 12.2%    E 6.0%    F 3.9%

A: 1 Person per Household    C: 3 People per Household    E: 5 People per Household  
 B: 2 People per Household    D: 4 People per Household    F: 6+ People per Household

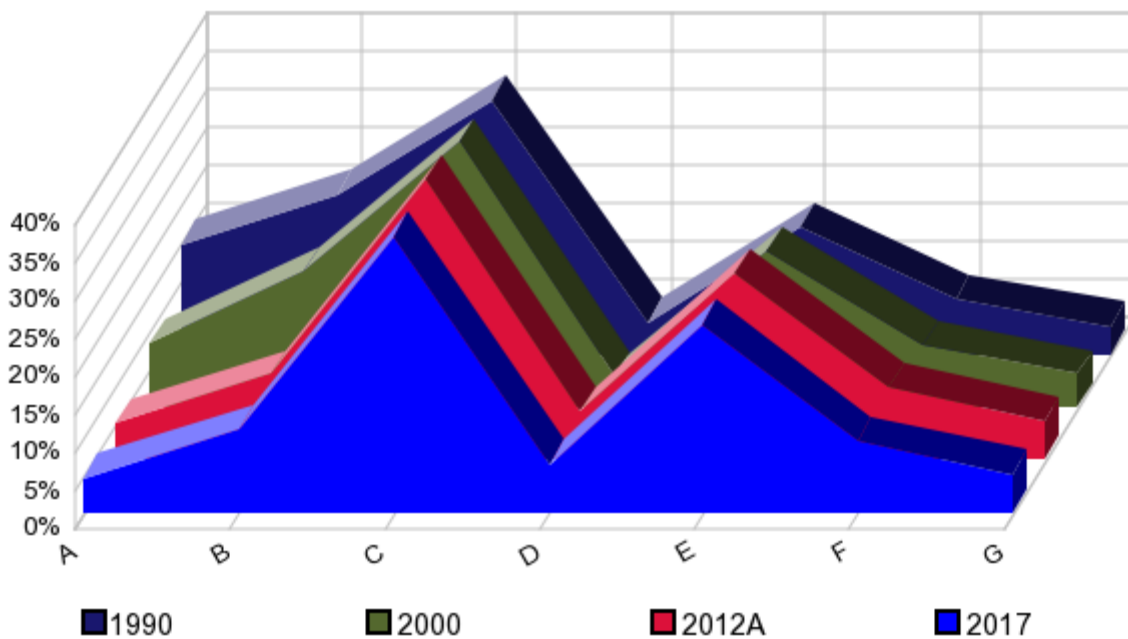
Age



Race and Ethnicity  
Percent Change



Educational Attainment  
Percent Change

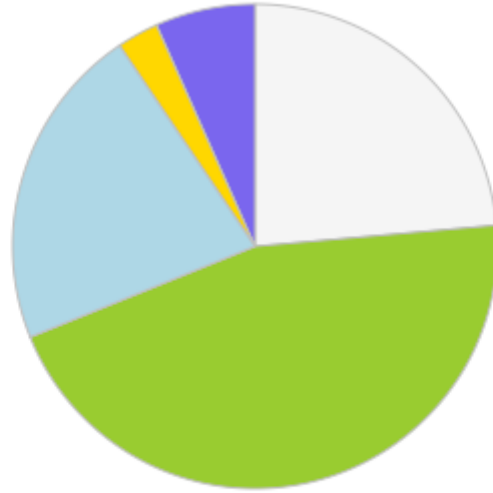


A: Grade K - 8  
B: Grade 9 - 12  
C: High School Grad

D: Associates Degree  
E: Some College  
F: Bachelors Degree

G: Graduate Degree

Marital Status  
2012A



Divorced  
23.7%

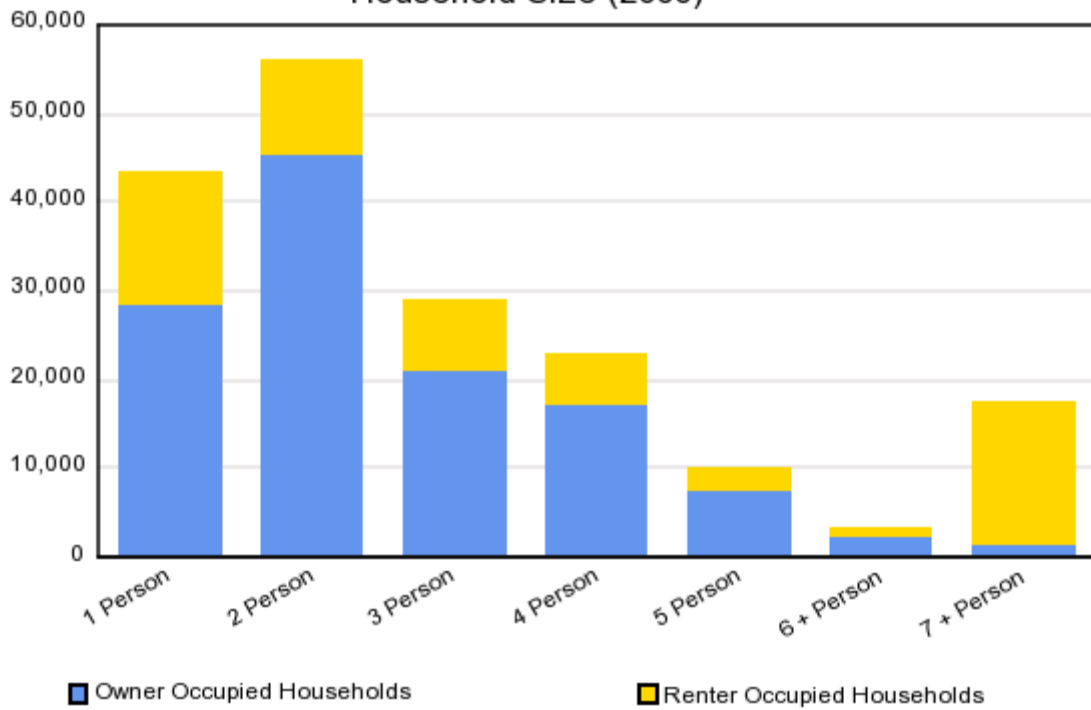
Never Married  
21.9%

Widowed  
6.8%

Married  
45.1%

Separated  
2.5%

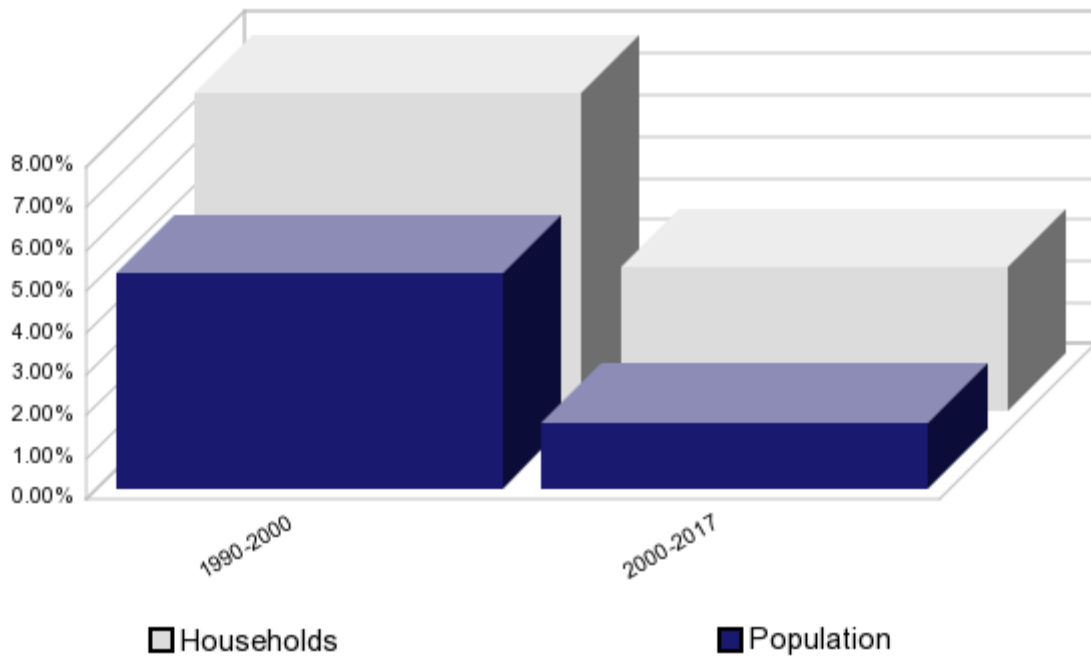
Household Size (2000)



Owner Occupied Households

Renter Occupied Households

### Households and Population Percent Change



© 2012 Experian, Inc. All Rights Reserved, Alteryx, Inc.

© U.S. Census Bureau (1990 and 2000 Census) All Rights Reserved, Alteryx, Inc.