

Maxwell #3

Land Site

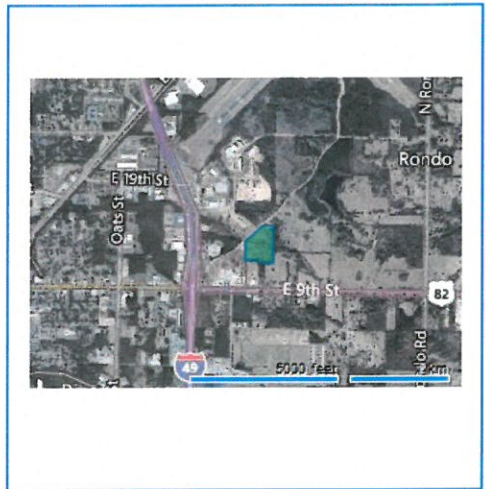
Maxwell Industrial Park
4201 19th Street
Texarkana, Arkansas 71834

County: Miller County, Arkansas



Coordinates:

 -93.996835, 33.445981



Features

AVAILABLE ACREAGE

13 acres

TOTAL ACREAGE

13 acres

SALE PRICE

\$35,000 per acre

SUBDIVIDABLE

Yes

PRODUCT TYPE

Industrial

GENERAL TERRAIN

Flat with Flood Plain portion

WITHIN CITY LIMITS

Yes

INDUSTRIAL PARK

Yes

Transportation

INTERSTATES

Primary

I-49 - .2 MI

Secondary

I-30 - 3 MI

HIGHWAYS

Primary

US - 82 - .8 MI

Secondary

US - 67 - 1 MI

AIRPORTS

Primary

Texarkana Regional (TXK) - Webb Field
Distance 1.1 MI

Services: Commercial, Freight, Charter

Secondary

Shreveport Regional (SHV)

Distance 68.9 (MI)

Services: Commercial, Freight, Charter

RAILROADS

Primary

Union Pacific

Secondary

Kansas City Southern

PORTS/NAVIGABLE WATER

Primary

Port of Shreveport - 77.5 MI

Secondary

Port of Camden - 67.9 MI

Utilities

Electric - AEP/SWEPCO

Water - Texarkana Water Utilities

Sewer - Texarkana Water Utilities

Gas - CenterPoint Energy

Tele Comm - Cable One

Fiber Optic - Cable One

Contact

PRIMARY

Michael Malone

President

Texarkana USA Chamber of Commerce

mmalone@texarkana.org

o. 903.792.7191

m. 903.306.3966

f. 903.793.4304

www.texarkana.org

819 North Stateline Avenue

Texarkana, TX 75501

DESCRIPTION

Mature Industrial Park location with close proximity to airport; entrance ramp to I-49; frontage on airport taxi way and east 19th Street

Additional property information:

mmalone@texarkana.org